



CHURCH PARK

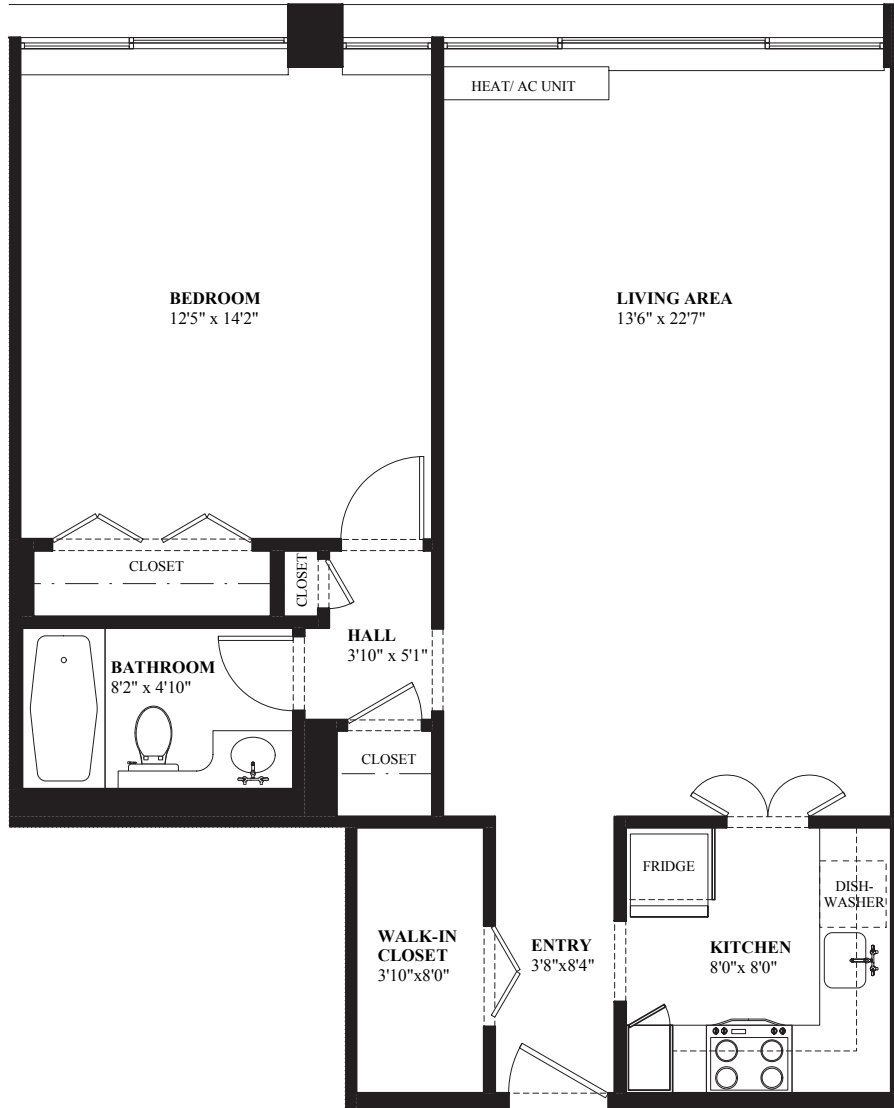
A P A R T M E N T S

221 MASSACHUSETTS AVE, BOSTON 02115

ARLINGTON

ONE BEDROOM – 763 SQ. FT.

MASSACHUSETTS AVENUE



This floor plan is intended for illustrative purposes only. Dimensions are approximate and configurations may vary slightly.

For more information or to set up an appointment, please contact:



Joe Armstrong

Leasing Manager – REALTOR®

Office 617 570-0099

Mobile 617 388-6621

Fax 617 570-0011

jarmstrong@prubostonrealty.com



Prudential

Prime Properties
Boston Realty Group